

Freezeless Utility & Sanitary Yard Hydrants

All Sanitary, Thermaline and H34 hydrants comply with the Safe Drinking Water Act effective 1/4/14



S3 Sanitary



S4H Sanitary
-ADA-



Thermaline®



H34

Freezeless, Low Lead, Sanitary Yard Hydrants are designed to produce immediate water flow in sub-zero temperatures.

- Specify for use in public areas such as camp grounds and parks or any location where potable water and low lead construction is required
- Hydrants are completely sealed to prevent ground water from entering the reservoir or service line
- Diverter spout allows independent water flow when hose is attached to backflow preventer
- The S4H meets ADA requirements for height and 5 lbs. maximum operating force

The Thermaline®, Low Lead, Sanitary Water Connector is a compact unit especially designed to provide water service to mobile homes in freezing conditions.

- Ideal wherever a freezeless sanitary tight line installation is needed, such as, waterers for livestock
- High strength plastic casing is insulated with permanently molded and bonded polyurethane foam
- 15 watt (110-120v) portable insert heater, which costs about a penny a day to operate even at 50° below zero
- Wheel handle at surface level shuts off water below the frost line when hydrant is not in use

The Model H34, Low Lead, Sanitary is a non-draining hydrant that features a thermostatically controlled heating element that prevents water in the hydrant from freezing even at temperatures down to 20 degrees below zero.

- One foot bury depth closed system design

Utility Hydrants are rugged and dependable with unrestricted and high capacity flow. Ideal for filling large vessels and for wash down purposes. Choose from Automatic or Manual close handle or Wheel handle models. Outlet connections from 3/4" NPT - 2" NPT. See page 2 & 5 for details.

Scan For Specifications,
Installation and
Troubleshooting



For information, please contact:

Freezeless Sanitary & Utility Yard Hydrants

Model / Specifications



| MODEL | Pipe Inlet | Galv. Steel Pipe Casing | Specifications |
|--|-----------------------|-------------------------|--|
| S3-LL Low Lead Sanitary | 1" N.P.T. Female | 1 1/4" | <ul style="list-style-type: none"> Low Lead <u>Complies with Safe Drinking Water Act effective 1/4/14</u> ASSE 1052 Nidel® Model 37HF Double Check Backflow Preventer Automatic draining Diverter Vent (Patent number 5,701,825) 3/8" galvanized steel operating pipe w/brass stem 4" Sch 80 PVC reservoir pipe Optional: ASSE 1057 Approved Device-Single Check vacuum Breaker (Suffix SC) |
| S4H-LL Sanitary Low Lead ADA Compliant | 1" N.P.T. Female | 1 1/4" | <ul style="list-style-type: none"> Low Lead <u>Complies with Safe Drinking Water Act effective 1/4/14</u> Meets ADA requirements for height and 5 lbs. Max operating force ASSE 1052 Nidel® Model 37HF Double Check Backflow Preventer Automatic draining Flow Diverter (Patent number 5,701,825) Push down and hold spring return handle to operate 3/8" galvanized steel operating pipe w/brass stem 3" Sch 80 PVC reservoir pipe Venturi designed shut-off valve Self Closing Optional: ASSE 1057 Approved Device-Single Check vacuum Breaker (Suffix SC) |
| Thermaline®-LL Low Lead Electric Heater | 3/4" N.P.T. Female | 1" | <ul style="list-style-type: none"> Low Lead <u>Complies with Safe Drinking Water Act effective 1/4/14</u> Brass head casting with 3/4" female pipe thread outlet Polypropylene rigid structural foam cover 15 watt (110-120v) portable insert heater with 3 prong plug 1/4" galvanized steel operating pipe Molded polyurethane foam insulation |
| H Models Low Lead Electric Heater | 1" N.P.T. Male | 1" | <ul style="list-style-type: none"> Low Lead <u>Complies with Safe Drinking Water Act effective 1/4/14</u> 1' Bury Only ASSE 1057 Approved hydrant |
| H34-LL | 3' long cord standard | | <ul style="list-style-type: none"> *ASSE 1052 Nidel® Model 50HF High Flow Double Check Backflow Preventer |
| H34-C12-LL | 12' long cord | | <ul style="list-style-type: none"> Thermostatically controlled 65 watt, 120 volt, 60 cycle, low watt density heating element. ON @ 80°, OFF @ 90° |
| H34-C25-LL | 25' long cord | | <ul style="list-style-type: none"> Shipping Weight: 13 Lbs each |
| U34 Utility Hydrant | 3/4" N.P.T. Female | 1" | <ul style="list-style-type: none"> 3/4" Brass Hose Thread Spout Handle: Automatic (A) or Manual (M) |
| U75 Utility Hydrant | 3/4" N.P.T. Female | 1" | <ul style="list-style-type: none"> 3/4" N.P.T. Female Outlet Handle: Automatic (A) or Manual (M) |
| U100 Utility Hydrant | 1" N.P.T. Female | 1 1/4" | <ul style="list-style-type: none"> 1" N.P.T. Female Outlet Handle: Automatic (A), Manual (M) or Wheel (W) |
| U125 Utility Hydrant | 1 1/4" N.P.T. Male | 1 1/4" | <ul style="list-style-type: none"> 1 1/4" N.P.T. Female Outlet Handle: Automatic (A), Manual (M) or Wheel (W) |
| U150 Utility Hydrant | 1 1/2" N.P.T. Female | 1 1/2" | <ul style="list-style-type: none"> 1 1/2" N.P.T. Female Outlet Handle: Manual (M) or Wheel (W) |
| U200 Utility Hydrant | 2" N.P.T. Female | 2" | <ul style="list-style-type: none"> 2" N.P.T. Female Outlet Handle: Manual (M) or Wheel (W) |

See page 6 for all shipping weights

S3 Bury Schedule

| Bury Depth | 1' | 2' | 3' | 4' * | 5' * | 6' * | 7' * |
|--------------------|---------|---------|---------|---------|------|---------|----------|
| Reservoir Depth | 10 1/2" | 11 7/8" | 13 1/4" | 14 5/8" | 16" | 17 3/8" | 18 3/4" |
| Overall Bury Depth | 22 1/2" | 35 7/8" | 49 1/4" | 62 5/8" | 76" | 89 3/8" | 102 3/4" |

* Must ship by truck line due to length.

S4H Bury Schedule

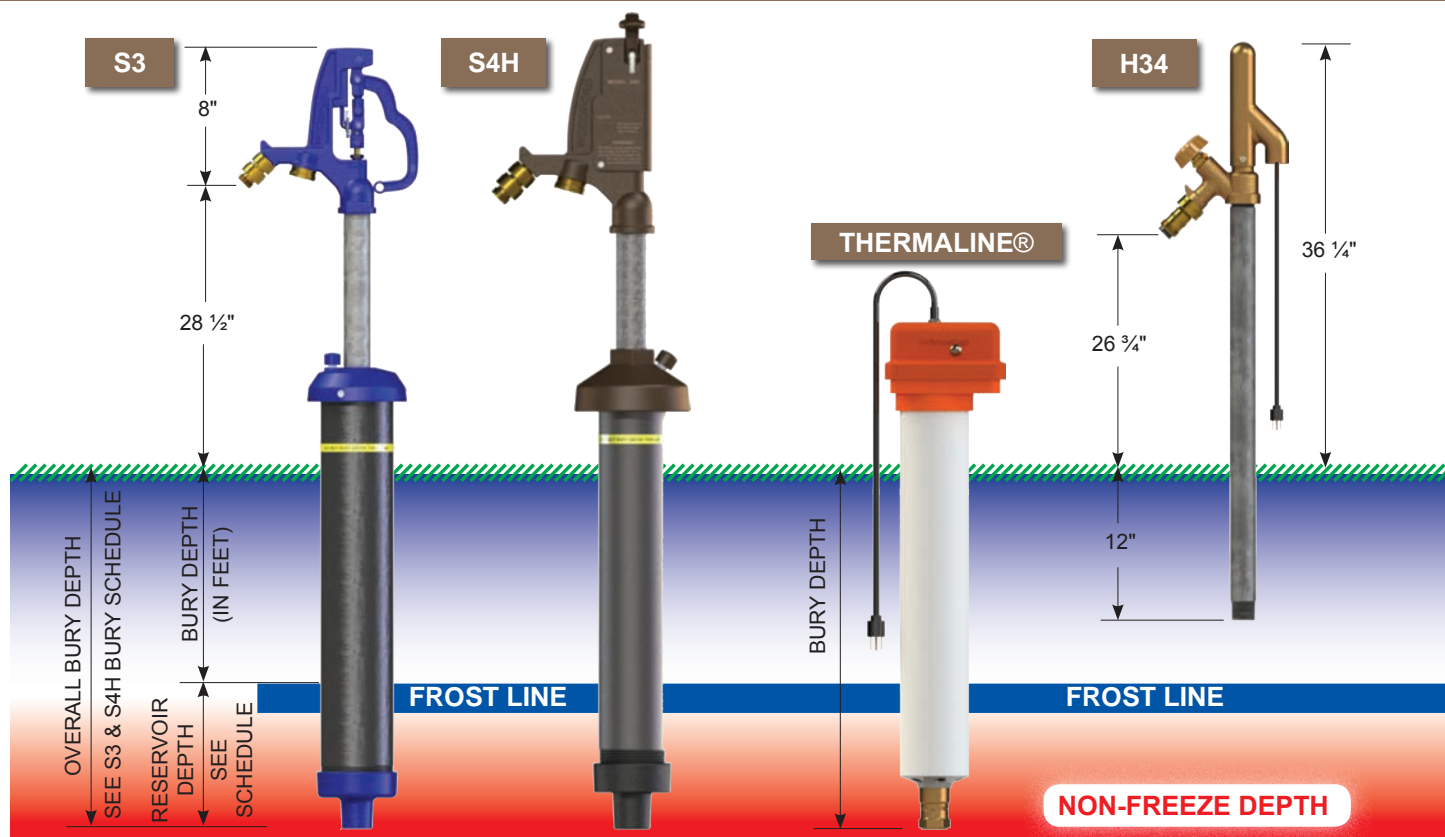
| Bury Depth | 1' | 2' | 3' | 4' * | 5' * | 6' * | 7' * |
|--------------------|-----|---------|---------|------|---------|---------|----------|
| Reservoir Depth | 12" | 13 5/8" | 15 3/8" | 17" | 18 7/8" | 20 1/2" | 22 1/4" |
| Overall Bury Depth | 24" | 37 5/8" | 51 3/8" | 65" | 78 7/8" | 92 1/2" | 106 1/4" |

* Must ship by truck line due to length.

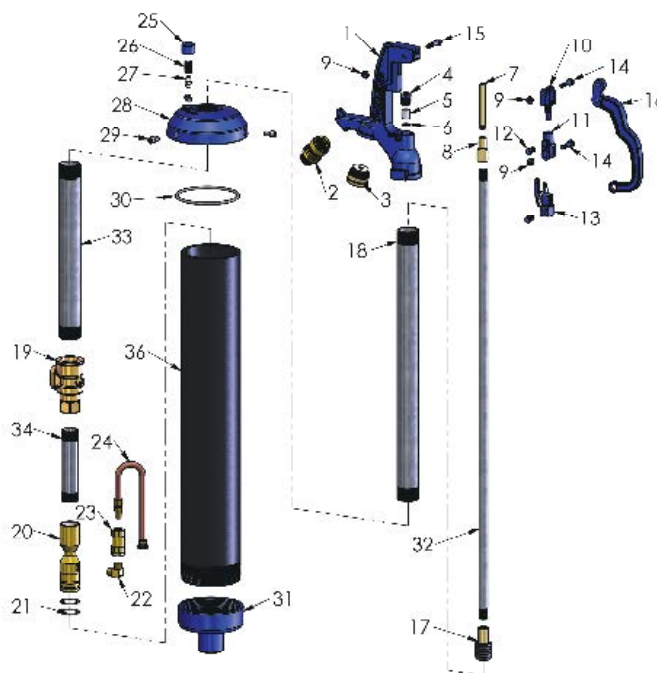
Utility Hydrants Operating Rods

| U34 Operating Pipe (Lever Handle) | | | U100/U125 Operating Pipe (Lever Handle) | | | U200 Operating Pipe (Lever Handle) | | | U150 Operating Pipe (Wheel Handle) | | |
|-----------------------------------|-------|------------------------|---|-------|-------------------------|--|-------|--------------------------|------------------------------------|-------|--------------------------|
| 56 | 42128 | 1' Bury (25 1/2" Long) | 58 | 42126 | 1' Bury (31 1/4" Long) | 60 | 42177 | 1' Bury (37 13/16" Long) | 62 | 42163 | 1' Bury (39 7/16" Long) |
| | 42129 | 2' Bury (37 1/2" Long) | | 42107 | 2' Bury (43 1/4" Long) | | 42178 | 2' Bury (49 13/16" Long) | | 42164 | 2' Bury (51 7/16" Long) |
| | 42130 | 3' Bury (49 1/2" Long) | | 42108 | 3' Bury (55 1/4" Long) | | 42179 | 3' Bury (61 13/16" Long) | | 42165 | 3' Bury (63 7/16" Long) |
| | 42131 | 4' Bury (61 1/2" Long) | | 42109 | 4' Bury (67 1/4" Long) | | 42180 | 4' Bury (73 13/16" Long) | | 42166 | 4' Bury (75 7/16" Long) |
| | 42132 | 5' Bury (73 1/2" Long) | | 42110 | 5' Bury (79 1/4" Long) | | 42181 | 5' Bury (85 13/16" Long) | | 42167 | 5' Bury (87 7/16" Long) |
| | 42133 | 6' Bury (85 1/2" Long) | | 42111 | 6' Bury (91 1/4" Long) | | 42182 | 6' Bury (97 13/16" Long) | | 42168 | 6' Bury (99 7/16" Long) |
| | 42134 | 7' Bury (97 1/2" Long) | | 42112 | 7' Bury (103 1/4" Long) | | 42183 | 7' Bury (109 13/16" Lg.) | | 42169 | 7' Bury (111 7/16" Long) |
| U75 Operating Pipe (Lever Handle) | | | U150 Operating Pipe (Lever Handle) | | | U100/125 Operating Pipe (Wheel Handle) | | | U200 Operating Pipe (Wheel Handle) | | |
| 57 | 42125 | 1' Bury (24 1/8" Long) | 59 | 42127 | 1' Bury (37 9/16" Long) | 61 | 42156 | 1' Bury (33 11/16" Long) | 63 | 42170 | 1' Bury (40 3/16" Long) |
| | 42101 | 2' Bury (36 1/8" Long) | | 42113 | 2' Bury (49 9/16" Long) | | 42157 | 2' Bury (45 11/16" Long) | | 42171 | 2' Bury (52 3/16" Long) |
| | 42102 | 3' Bury (48 1/8" Long) | | 42114 | 3' Bury (61 9/16" Long) | | 42158 | 3' Bury (57 11/16" Long) | | 42172 | 3' Bury (64 3/16" Long) |
| | 42103 | 4' Bury (60 1/8" Long) | | 42115 | 4' Bury (73 9/16" Long) | | 42159 | 4' Bury (69 11/16" Long) | | 42173 | 4' Bury (76 3/16" Long) |
| | 42104 | 5' Bury (72 1/8" Long) | | 42116 | 5' Bury (85 9/16" Long) | | 42160 | 5' Bury (81 11/16" Long) | | 42174 | 5' Bury (88 3/16" Long) |
| | 42105 | 6' Bury (84 1/8" Long) | | 42117 | 6' Bury (97 9/16" Long) | | 42161 | 6' Bury (93 11/16" Long) | | 42175 | 6' Bury (100 3/16" Long) |
| | 42106 | 7' Bury (96 1/8" Long) | | 42118 | 7' Bury (109 9/16" Lg.) | | 42162 | 7' Bury (105 11/16" Lg.) | | 42176 | 7' Bury (112 3/16" Long) |

Freezeless Sanitary Yard Hydrants Rough-In / Parts List



| S3 | | |
|------|---------|---|
| ITEM | PART# | DESCRIPTION |
| | 15219 | S3 Head Assembly (Includes Items 1-16) |
| 1 | 10449 | Head |
| 2 | 37HF-BR | 37HF Backflow Preventer |
| 3 | 15220 | Diverter Assembly |
| 4 | 10100 | Packing Nut |
| 5 | 10101 | Packing |
| 6 | 10102 | Packing Support Washer |
| 7 | 10104 | Brass Rod Stem |
| 8 | 10011 | Reducing Coupling |
| 9 | 10206 | Hex Nut |
| 10 | 10444 | Upper Link |
| 11 | 15211 | Lower Link (with set screw 10019) |
| 12 | 10019 | Set Screw |
| 13 | 15241 | Cam and Clevis Assembly (blue) |
| 14 | 10020 | Link Bolt |
| 15 | 10021 | Lever Bolt |
| 16 | 10443 | Lever |
| 17 | 10106 | Plunger |
| 18 | 10285 | Upper Pipe |
| 19 | 10017 | Valve Body (1" NPT Inlet) |
| 20 | 15189 | Venturi Assembly |
| 21 | 10321 | Valve Body O-Ring (2 Required) |
| 22 | 10432 | Brass Elbow |
| 23 | 10408 | Check Valve |
| 24 | 15216 | Siphon Tube Assembly |
| 25 | 10446 | Vent Cap |
| 26 | 10445 | 3/8" Pipe Nipple |
| 27 | 15136 | Sniffer Valve |
| 28 | 15218 | Casing Cover w/Warning Label |
| 29 | 10409 | Reservoir Clamp Screw (3) |
| 30 | 10410 | Reservoir O-Ring |
| 31 | 10401 | Inlet Casting |
| | RK-Y1 | Repair Kit (Includes Items 4-7 & 17) |
| | RK-SHL | Repair Kit (Includes Items 9-15) |



| Operating Pipe (Bury Depth & Length) | | |
|--------------------------------------|-------|-------------------------|
| 32 | 10023 | 1' Bury (35 1/2" Long) |
| | 10024 | 2' Bury (47 1/2" Long) |
| | 10025 | 3' Bury (59 1/2" Long) |
| | 10026 | 4' Bury (71 1/2" Long) |
| | 10027 | 5' Bury (83 1/2" Long) |
| | 10028 | 6' Bury (95 1/2" Long) |
| | 10029 | 7' Bury (107 1/2" Long) |

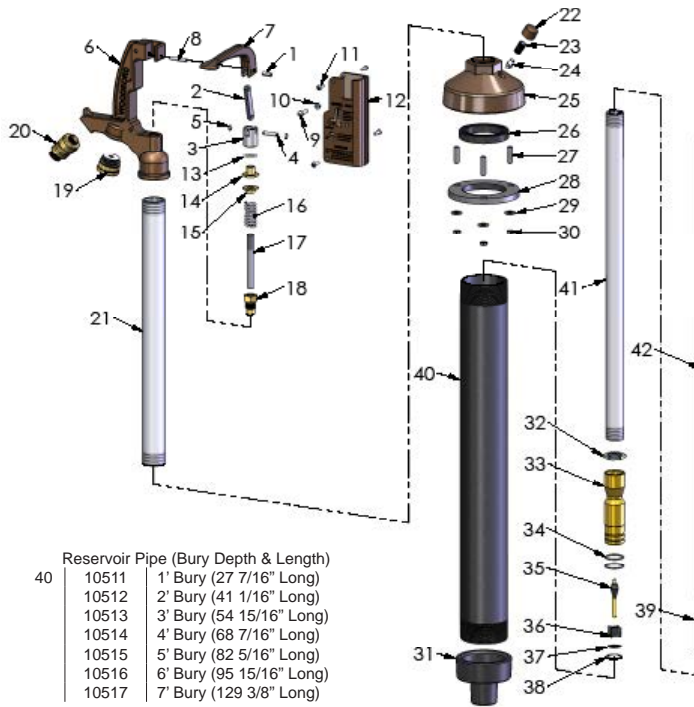
| 1 1/4" Pipe Casing (Bury Depth & Length) | | |
|--|-------|-------------------------|
| 33 | 10055 | 1' Bury (35 1/2" Long) |
| | 10056 | 2' Bury (47 1/2" Long) |
| | 10057 | 3' Bury (59 1/2" Long) |
| | 10058 | 4' Bury (71 1/2" Long) |
| | 10059 | 5' Bury (83 1/2" Long) |
| | 10060 | 6' Bury (95 1/2" Long) |
| | 10061 | 7' Bury (107 1/2" Long) |

| 1" Extension Pipe (Bury Depth & Length) | | |
|---|-------|------------------------|
| 34 | 10411 | 1' Bury (5 3/4" Long) |
| | 10412 | 2' Bury (7" Long) |
| | 10413 | 3' Bury (8 3/4" Long) |
| | 10414 | 4' Bury (9 3/4" Long) |
| | 10415 | 5' Bury (11 1/4" Long) |
| | 10416 | 6' Bury (12 1/4" Long) |
| | 10417 | 7' Bury (13 3/4" Long) |

| Reservoir Pipe (Bury Depth & Length) | | |
|--------------------------------------|-------|-------------------------|
| 35 | 10421 | 1' Bury (26" Long) |
| | 10422 | 2' Bury (39 1/4" Long) |
| | 10423 | 3' Bury (52 1/2" Long) |
| | 10424 | 4' Bury (66" Long) |
| | 10425 | 5' Bury (79 1/2" Long) |
| | 10426 | 6' Bury (92 3/4" Long) |
| | 10427 | 7' Bury (106 1/4" Long) |
| | 15201 | Warning Label Kit |

Freezeless Sanitary Yard Hydrants

Parts Lists

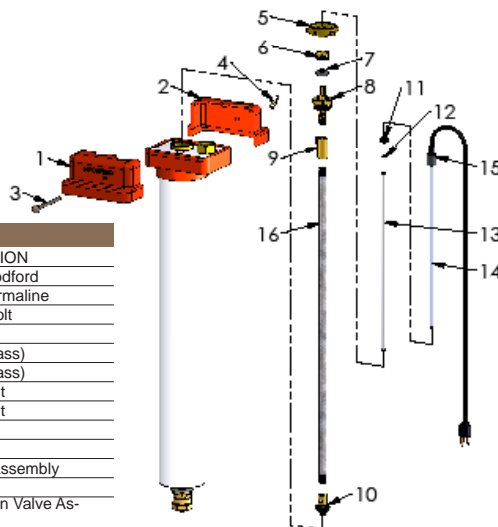


| Reservoir Pipe (Bury Depth & Length) | |
|--------------------------------------|--------------------------------|
| 40 | 10511 1' Bury (27 7/16" Long) |
| | 10512 2' Bury (41 1/16" Long) |
| | 10513 3' Bury (54 15/16" Long) |
| | 10514 4' Bury (68 7/16" Long) |
| | 10515 5' Bury (82 5/16" Long) |
| | 10516 6' Bury (95 15/16" Long) |
| | 10517 7' Bury (129 3/8" Long) |

| Lower Pipe (Bury Depth & Length) | |
|----------------------------------|-------------------------------|
| 41 | 10501 1' Bury (25 1/8" Long) |
| | 10502 2' Bury (38 3/4" Long) |
| | 10503 3' Bury (52 1/2" Long) |
| | 10504 4' Bury (66 1/8" Long) |
| | 10505 5' Bury (80" Long) |
| | 10506 6' Bury (93 5/8" Long) |
| | 10507 7' Bury (107 3/8" Long) |

| Operating Pipe (Bury Depth & Length) | |
|--------------------------------------|-------------------------------|
| 42 | 10521 1' Bury (47 1/8" Long) |
| | 10522 2' Bury (60 3/4" Long) |
| | 10523 3' Bury (74 1/2" Long) |
| | 10524 4' Bury (88 1/8" Long) |
| | 10525 5' Bury (102" Long) |
| | 10526 6' Bury (115 5/8" Long) |
| | 10527 7' Bury (129 3/8" Long) |

| S4H | | |
|------|---------|--|
| ITEM | PART # | DESCRIPTION |
| | 15137 | Operating Link Assembly (Includes Items 1-5) |
| 1 | 50040 | Roll Pin |
| 2 | 10375 | Clevis Link |
| 3 | 10376 | Clevis |
| 4 | 10377 | Clevis Pin |
| 5 | 10319 | E-Ring (2) |
| 6 | 10552 | S4H Head |
| 7 | 10553 | Handle |
| 8 | 10551 | Handle Pin |
| 9 | 10328 | Stop Screw |
| 10 | 10329 | Jam Nut |
| 11 | 10336 | Head Cover Screws (4) |
| 12 | 15240 | Head Cover |
| 13 | 10307 | Washer |
| 14 | 10308 | Swivel Nut |
| 15 | 10494 | Lock Nut |
| 16 | 10465 | Operating Rod Extension |
| 17 | 10489 | Spring |
| 18 | 15232 | Packing Nut Assembly |
| 19 | 15220 | Diverter Assembly |
| 20 | 37HF-BR | 37HF Backflow Preventer |
| 21 | 10496 | Upper Pipe |
| 22 | 10555 | Vent Cap |
| 23 | 10556 | 3/8" Pipe Nipple |
| 24 | 15136 | Snifter Valve |
| 25 | 10554 | Casing Cover |
| 26 | 10491 | Cup Gasket |
| 27 | 10534 | Threaded Stud (3) |
| 28 | 10483 | Reservoir Flange |
| 29 | 10332 | Flat Washer (3) |
| 30 | 10331 | Hex Nut (3) |
| 31 | 10482 | Inlet Casting |
| 32 | 10334 | 1" Lock Nut |
| 33 | 15233 | Venturi Assembly |
| 34 | 10321 | Venturi O-Rings (2) |
| 35 | 15134 | Valve Plug |
| 36 | 10322 | Valve Plug Guide |
| 37 | 10469 | Inlet Screen |
| 38 | 10323 | Snap Ring #3000 |
| 39 | 10497 | Coupling |



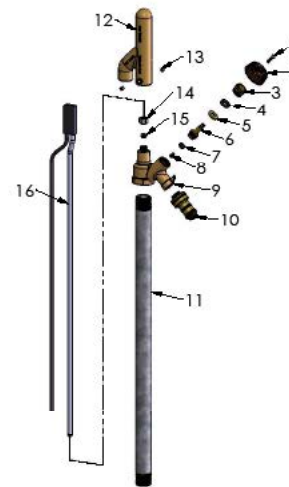
| THERMALINE | | |
|------------|-------|----------------------------------|
| ITEM | PART# | DESCRIPTION |
| 1 | 80055 | Cover, Woodford |
| 2 | 80056 | Cover, Thermaline |
| 3 | 80073 | Carriage Bolt |
| 4 | 80068 | Wing Nut |
| 5 | 80014 | Handle (Brass) |
| *5a | 80013 | Handle (Brass) |
| 6 | 80017 | Packing Nut |
| *6a | 80005 | Packing Nut |
| 7 | 30247 | Packing |
| *7a | 80008 | Packing |
| 8 | 85064 | Head Nut Assembly |
| 9 | 80066 | Yoke Nut |
| 10 | 85015 | Combination Valve Assembly |
| **11 | 80062 | Heater Well Thumb Nut |
| 12 | 80063 | Heater Well Washer |
| **13 | 85001 | 1' Heater Well Assembly |
| 13a | 85002 | 2' Heater Well Assembly |
| **14 | 85061 | 1' Heater Assembly (Includes 15) |
| 14a | 85062 | 2' Heater Assembly (Includes 15) |
| 15 | 80061 | Heater Cover |
| RK-THERM | | Repair Kit (Includes Items 5-12) |

* Parts 5a, 6a & 7a cannot be used with 85064 Head Nut Assembly. (For units sold before 6/1/2011)

** Old style heaters originally used in Thermalines with cast iron covers are replaced by items 11, 13 and 14. (Includes Item 12)

| Operating Pipe (For Brass Head) | |
|---------------------------------|------------------------------|
| 16 | 80081 1' Bury (9-3/8" long) |
| | 80082 2' Bury (23-1/8" long) |
| | 80083 3' Bury (35-1/8" long) |
| | 80084 4' Bury (47-1/8" long) |
| | 80085 5' Bury (59-1/8" long) |
| | 80086 6' Bury (71-1/8" long) |
| | 80087 7' Bury (83-1/8" long) |

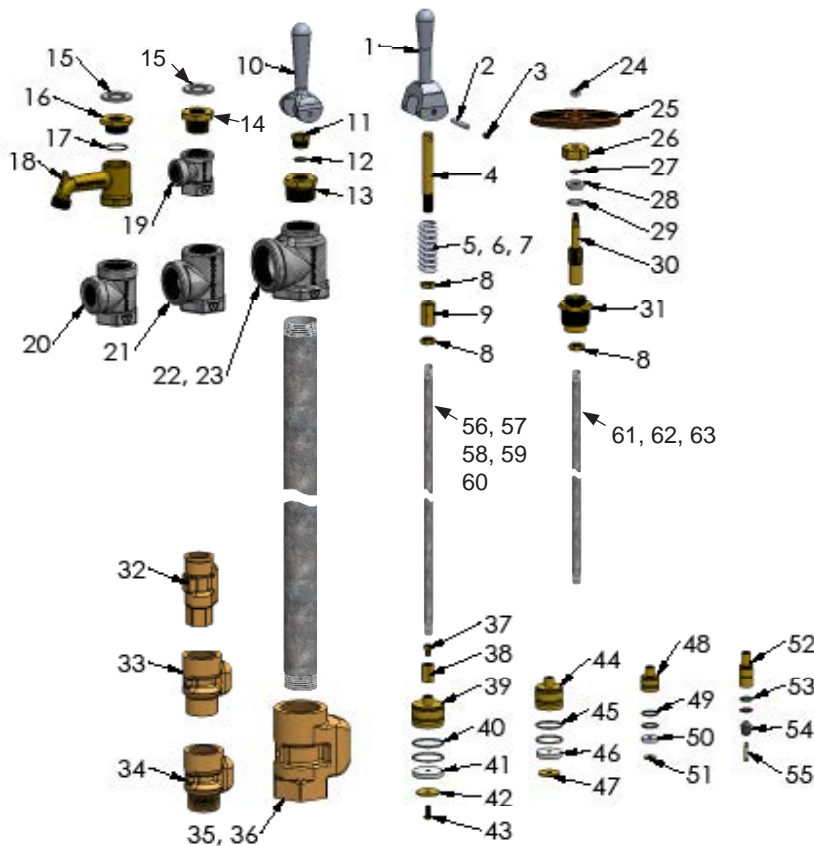
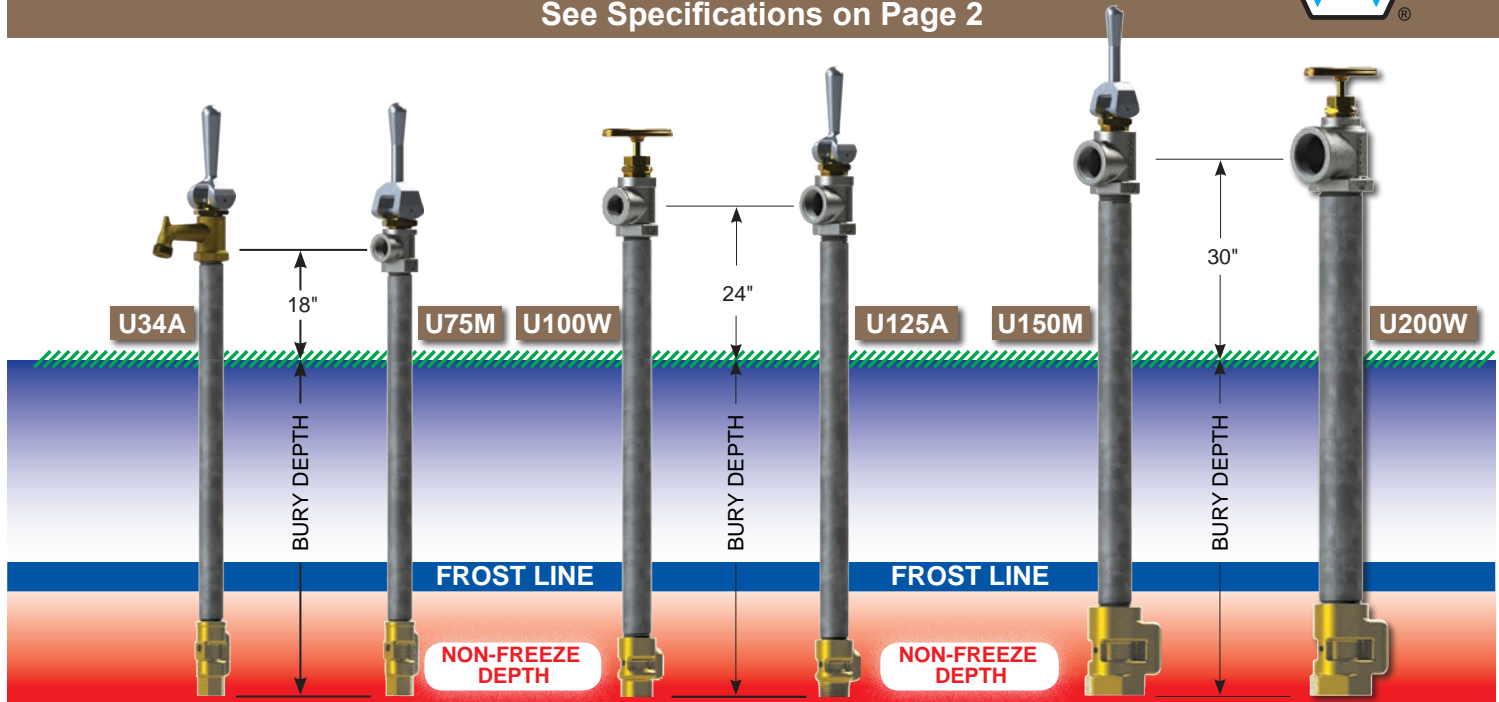
| Operating Pipe (For Cast Iron Head) | |
|-------------------------------------|------------------------------|
| 16a | 80031 1' Bury (9-3/8" long) |
| | 80032 2' Bury (21-3/8" long) |
| | 80033 3' Bury (33-3/8" long) |
| | 80034 4' Bury (45-3/8" long) |
| | 80035 5' Bury (57-3/8" long) |
| | 80036 6' Bury (69-3/8" long) |
| | 80037 7' Bury (81-3/8" long) |



| H34 | | |
|--------|---------|---|
| ITEM | PART# | DESCRIPTION |
| 1 | 30002 | Handle Screw |
| 2 | 30233 | Wheel Handle |
| 3 | 30107 | Packing Nut |
| 4 | 30247 | EPDM Packing |
| 5 | 30105 | Packing Washer |
| 6 | 30104 | Operating Stem |
| 7 | 30008 | Washer |
| 8 | 30009 | Washer Screw |
| 9 | 10542 | H34 Head |
| 10 | 50HF-BR | 50HF Backflow Preventer - Brass |
| 11 | 10610 | 1" Pipe Casing |
| 12 | 10541 | H34 Heater Cover |
| 13 | 10544 | Compression Nut |
| 14 | 10545 | Compression Sleeve |
| 15 | 10546 | Set Screw (2) |
| 16 | 10543 | H34 Heater Assembly - includes 3' Cord |
| 16a | 10599 | H34 Heater Assembly - includes 12' Cord |
| 16b | 10560 | H34 Heater Assembly - includes 25' Cord |
| RK-H34 | | Repair Kit (Includes Items 1-8) |
| RK-HTR | | Repair Kit (Includes Items 13-16) |

Utility Hydrant Rough-In/Parts

See Specifications on Page 2



Items 56-63 Operating Rod lengths are listed on page 2

| PART# | DESCRIPTION |
|-------|---|
| 41018 | U34/U75 Plunger Repair Kit (Items 37, 38, 52-55) |
| 41060 | U100/U125 Plunger Repair Kit (Items 37,38, 43, 48-51) |
| 41083 | U150 Plunger Repair Kit (Items 37,38, 43, 44-47) |
| 41093 | U200 Plunger Repair Kit (Items 37-43) |

UTILITY HYDRANTS

| ITEM | PART# | DESCRIPTION |
|------|-------|--|
| 1 | 41025 | (M) Manual Close Handle |
| 2 | 41202 | Handle Pin |
| 3 | 41201 | Set Screw |
| 4 | 41632 | Stem |
| 5 | 41033 | Spring (U34 & U75) |
| 6 | 41068 | Spring (U100 & U125) |
| 7 | 41102 | Spring (U150 & U200) |
| 8 | 41624 | 1/2" NPSM Locknut |
| 9 | 41631 | Coupling |
| 10 | 41037 | (A) Automatic Close Handle (N/A U150 & U200) |
| 11 | 41029 | Packing Nut |
| 12 | 41014 | O-Ring |
| 13 | 41067 | Bonnet Nut |
| 14 | 41043 | Bonnet Nut (75) |
| 15 | 40040 | Bearing Washer |
| 16 | 41031 | Bonnet Nut (U34) |
| 17 | 50011 | O-Ring (U34) |
| 18 | 41036 | Spout Head (U34) |
| 19 | 41044 | 3/4" Head (U75) |
| 20 | 41041 | 1" Head (U100) |
| 21 | 41070 | 1 1/4" Head (U125) |
| 22 | 41084 | 1 1/2" Npt Tee (U150) |
| 23 | 41095 | 2" Npt Tee (U200) |
| 24 | 10206 | 5/16" Nut |
| 25 | 41144 | Wheel Handle |
| 26 | 41005 | Bonnet Nut |
| 27 | 41215 | O-Ring |
| 28 | 41007 | Packing Gland |
| 29 | 41056 | O-Ring |
| 30 | 41145 | Stem Screw |
| 31 | 41061 | Stuffing Box |
| 32 | 41021 | Valve Body (U34 & U75) |
| 33 | 41040 | Valve Body (U100) |
| 34 | 41064 | Valve Body (U125) |
| 35 | 41086 | 1 1/2" Valve Body (U150) |
| 36 | 41097 | 2" Valve Body (U200) |
| 37 | 41013 | Swivel Screw |
| 38 | 41012 | Swivel Coupling |
| 39 | 41089 | Plunger (U200) |
| 40 | 41090 | O-Ring (2-Req'd) (U200) |
| 41 | 41091 | Rubber Seat Washer (U200) |
| 42 | 41092 | Brass Washer (U200) |
| 43 | 41059 | Screw |
| 44 | 41078 | Plunger (U150) |
| 45 | 41079 | O-Ring (2-Req'd) (U150) |
| 46 | 41080 | Rubber Seat Washer (U150) |
| 47 | 41081 | Brass Washer (U150) |
| 48 | 41055 | Plunger (U100 & U125) |
| 49 | 41056 | O-Ring (2) (U100 & U125) |
| 50 | 41057 | Rubber Seat Washer (U100 & U125) |
| 51 | 41058 | Brass Washer (U100 & U125) |
| 52 | 41015 | Plunger (U34 & U75) |
| 53 | 41014 | O-Rings (2) (U34 & U75) |
| 54 | 41016 | Fuller Ball (U34 & U75) |
| 55 | 41017 | Fuller Ball Screw (U34 & U75) |

Freezeless Sanitary & Utility Yard Hydrants Information



NOTICE

• All Yard Hydrants, except the H34, must be buried so that the valve body is located below the frost line for proper draining.

- All hydrants are intended For Irrigation and Outdoor Watering.
- All hydrants are not recommended for continuous use.
- All specifications are subject to change without notice.

Visit our website for Patent Information, Individual Spec. Sheets, Installation and Troubleshooting Instructions
www.woodfordmfg.com or call 1-800-621-6032

Limited Warranty

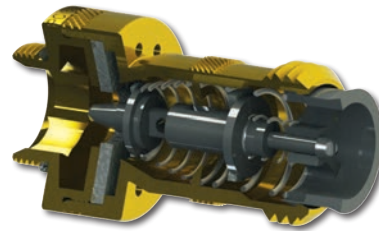
All hydrants shown in this brochure are sold with a limited warranty for one year against defects in material and workmanship. We will replace or issue credit (at our option) for defective goods that are returned for inspection and found to be defective within one year of purchase from Woodford.

SHIPPING WEIGHTS (Lbs)

| Model / Bury Depth (Ft) | 1 | 2 | 3 | 4 | 5 | 6* | 7* |
|-------------------------|----|----|----|----|----|----|----|
| S3 | 36 | 42 | 48 | 54 | 59 | 65 | 71 |
| S4H | 36 | 40 | 45 | 49 | 54 | 58 | 62 |
| Thermaline® | 7 | 9 | 12 | 14 | 17 | 19 | 22 |
| U34 | 9 | 11 | 13 | 15 | 17 | 19 | 21 |
| U75 | 8 | 10 | 12 | 14 | 16 | 18 | 20 |
| U100 | 12 | 15 | 18 | 20 | 23 | 26 | 29 |
| U125 | 13 | 16 | 19 | 22 | 25 | 28 | 31 |
| U150 | 20 | 23 | 26 | 29 | 32 | 36 | 39 |
| U200 | 25 | 29 | 33 | 37 | 41 | 45 | 49 |

*6' & 7' hydrants must ship by truck line due to length.

*NIDEL® Model 50HF Backflow Preventer



The patented NIDEL® Model 50HF high flow double check backflow preventer is standard equipment on specified Roof Hydrant models. It is intended for irrigation and outdoor watering and is designed to protect hose connections from backflow contamination in freezing and non-freezing conditions.

The Model 50HF automatically drains when the hose is removed and unlike single check vacuum breakers can be field tested for reliability.

- ASSE 1052 Approved
- Field Testable (see instruction sheet)
- Two independent check valves
- Drains automatically when hose is removed
- No spray back

Freezeless Yard Hydrants See separate brochure for models and features.



WOODFORD®



Proudly Made In The U.S.A.

Woodford Manufacturing Company,
LLC. 2121 Waynoka Road
Colorado Springs, CO 80915 USA
800-621-6032
800-765-4115 (Fax)
sales@woodfordmfg.com
www.woodfordmfg.com

© Woodford Mfg. Co. 2013 Printed in the U.S.A.